

Please inform a staff member if you:

- **Are pregnant or a nursing mother**
- Are claustrophobic
- Require the results sent by a specific time or method to your doctor

Additional Information

Remember to remain still while your heart is being imaged, as movement may blur the images.

The amount of radiation you will receive during the test is similar to many types of x-rays and CT scans.

There are no known side effects from this examination.

The radioactive tracer you are given remains in your body for a short time and is cleared from the body through normal bodily functions.

Drinking plenty of fluids after the test will help in the clearance of this radioactive tracer from the body.

There will be no restrictions to your daily routine following the test.

Please Recycle



If you no longer require this pamphlet please return it to the pamphlet holder or place it in a recycle bin. Thank-you.

Please contact us if you are unable to attend the test or if you have any queries

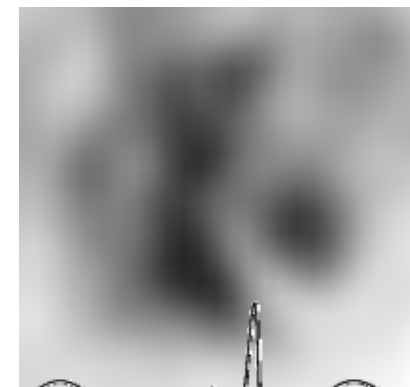
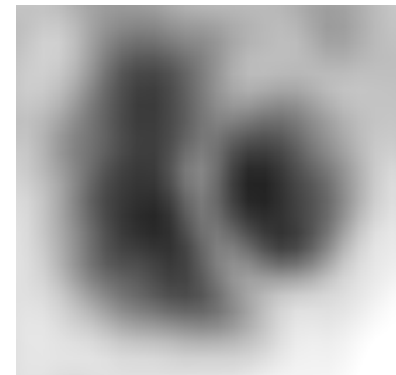
The Alfred Hospital
Nuclear Medicine Department

First Floor East Block
55 Commercial Road Melbourne VIC 3004

Phone: 03 9076 2432
Fax: 03 9076 2599
Web: www.alfred.org.au/nuclearmedicine

Version ANM 0376v1 Issued 11 May 2010 by HB

 Nuclear
TheAlfred Medicine



**GATED CARDIAC
BLOOD POOL
SCAN**

(GCBPS)

Patient Information

GATED CARDIAC BLOOD POOL SCAN

A Nuclear Medicine Gated Cardiac Blood Pool Scan (GCBPS) is a procedure used to assess the function of the heart.

A radioactive substance which emits gamma radiation is added to your own blood and the passage of the blood through the heart is imaged by a Gamma Camera.

The images provide information about the size of the chambers (ventricles) of the heart, how well each part of the ventricle is contracting, and enables us to assess the ejection fraction, a measure of how well the heart is pumping.

Patient Preparation

- **No preparation required for this test**

Test Duration

- **1 Hour**

What does a Gated Cardiac Blood Pool Scan involve?

PART 1

You will be given an injection into a vein in your arm of a non-radioactive substance. This prepares your red blood cells for attachment to the radioactive substance.

After this injection we wait about 10 minutes.

PART 2

An intravenous cannula will be inserted into another vein in your arm and about 3 mL of blood withdrawn into a syringe containing a small amount of a radioactive substance.

Your blood is then left to incubate for about 15 minutes to allow the radioactivity to attach to your red blood cells.

PART 3

You will be attached to an ECG machine and positioned under a Gamma Camera. This will allow the computer to synchronise the acquired images with your heartbeat.

PART 4

Your own radioactive blood will be given back to you through the intravenous cannula. Images will then be taken over the next 15 to 30 minutes.

PART 5

A Nuclear Medicine Specialist will interpret the images and send a report to your referring doctor that same day.

What does a Gated Cardiac Blood Pool Scan investigate?

Some of the more common indications for having this test are:

- Dilated Cardiomyopathy (poorly contracting heart muscle)
- Ischaemic Heart Disease (poor blood supply to heart muscle)
- Assessment before and after chemotherapy
- Assessment before surgery
- Heart transplant monitoring